

# Dr Paul Golby CBE FREng

Chair of National Energy System Operator  
(NESO)

# Strategic planner role

NESO will act as a body, independent of asset owners, to coordinate system design and planning efforts across the energy system



## Strategic planning

For the first time in industry, we will **coordinate system design and planning efforts across the whole energy industry** so planning and investment decisions can be optimised to deliver GB's net zero objectives at the most equitable cost to consumers.

Our three overarching roles are:

- **Strategic Spatial Energy Planning (SSEP)**
- **Centralised Strategic Network Planning (CSNP)**
- **Regional Energy Strategic Planning (RESP)**



Facilitate Net Zero target while ensuring energy security



Deliver regional and national whole energy solutions



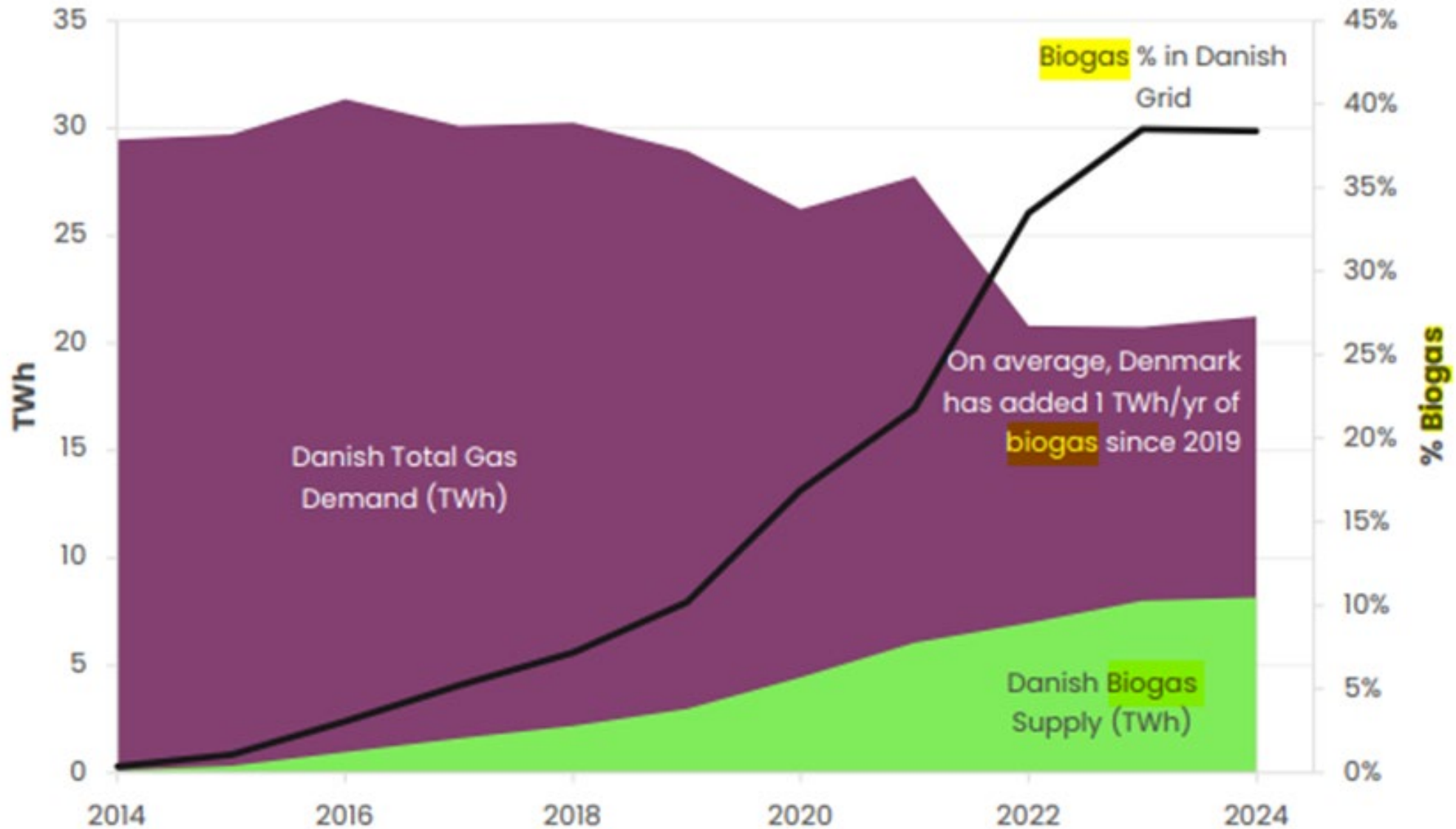
Consider the impact on communities

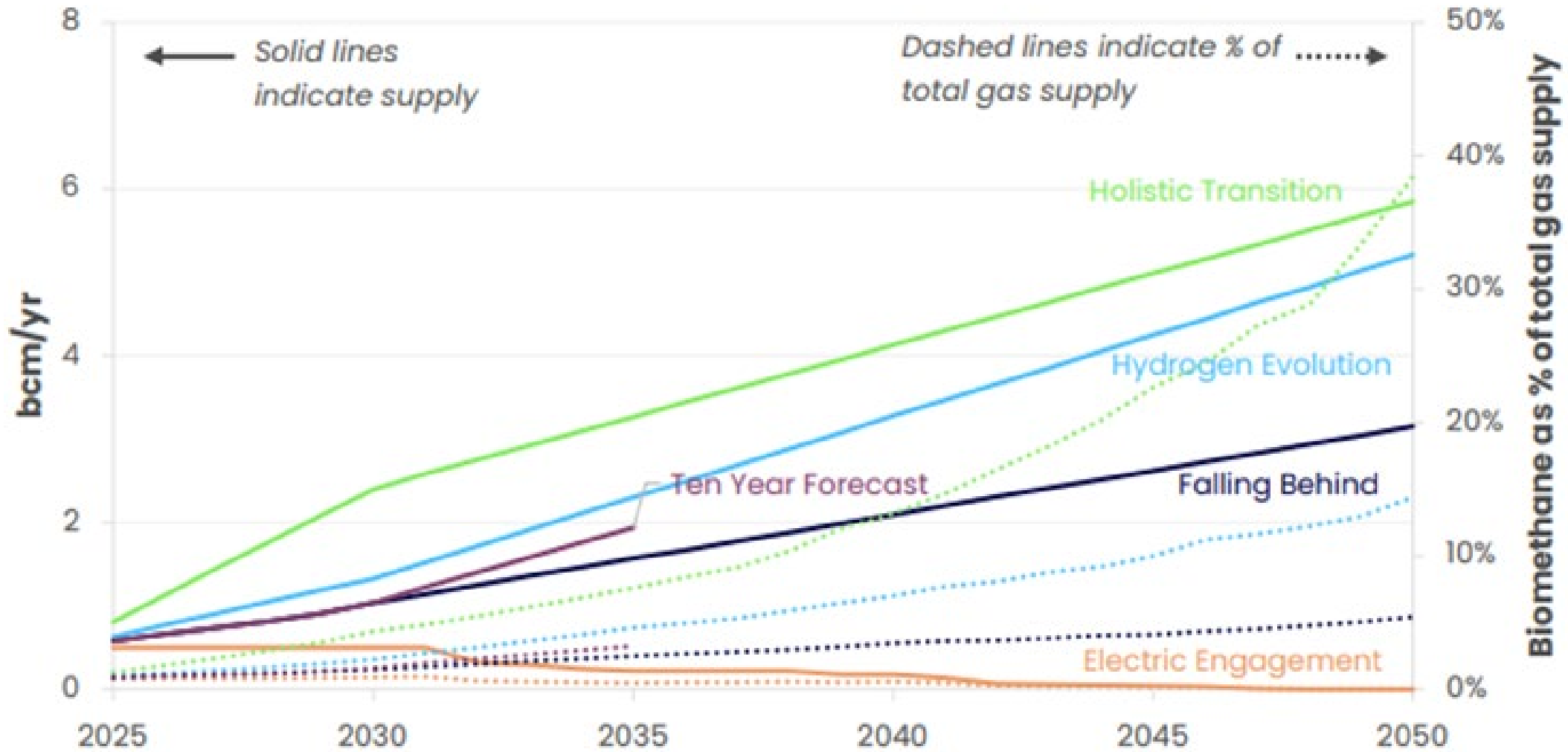


Consider the impact on the environment

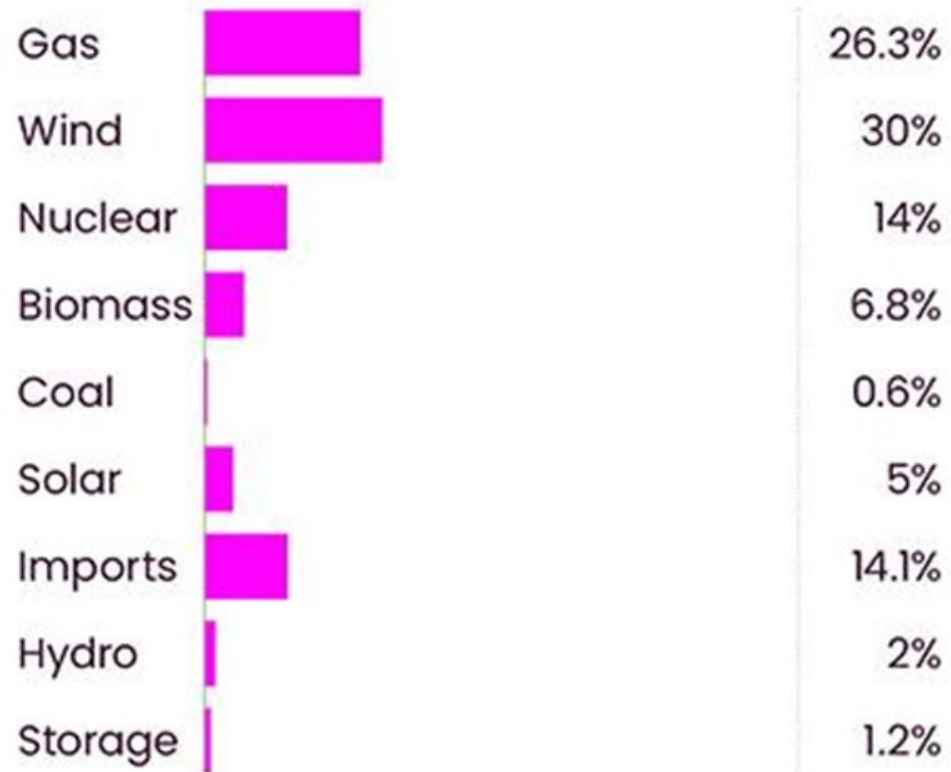


Consider costs to consumers and deliver economic strategies

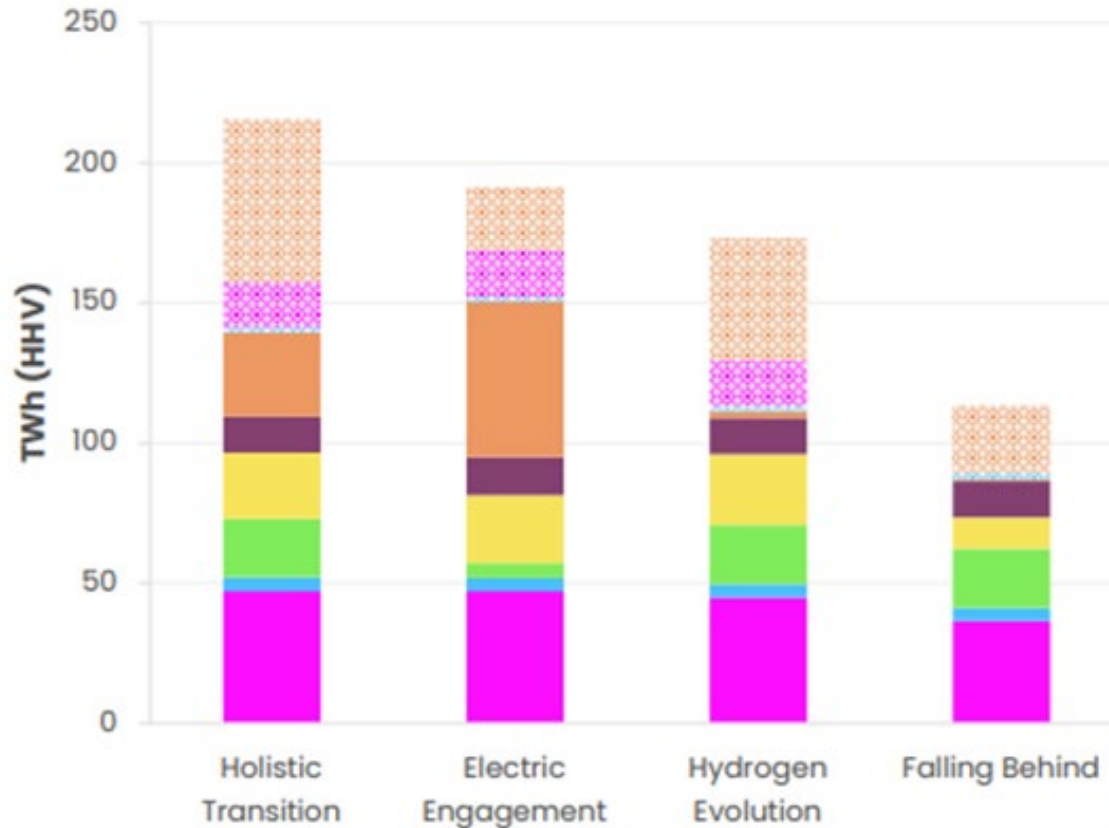




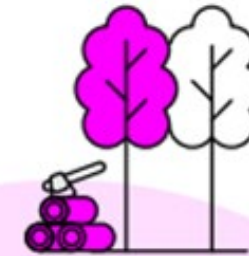
## How was our electricity generated?



### 76. Biomass supply source breakdown by pathway in 2050



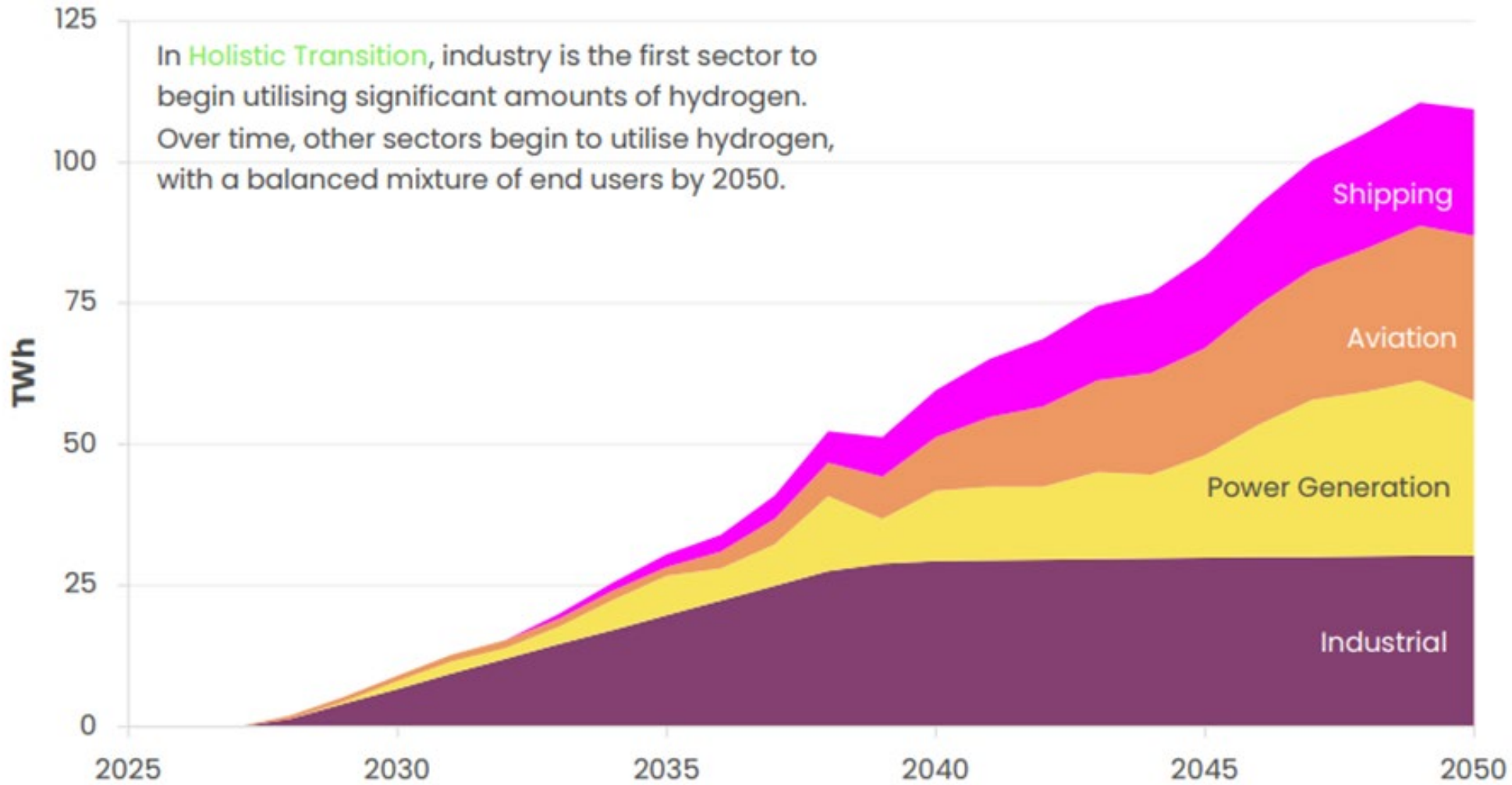
- MSW, C&I (biogenic)
- Waste wood
- Waste biodiesel, bioethanol
- Biomass imports
- Agri residues
- Energy crops
- Biogas
- Biofuel imports
- Forest residues



**The UK is a significant importer of wood pellets for power and of forestry products in general.**

In 2024, we imported 9.3 million tonnes of wood pellets, 5.2 million tonnes of pulp and paper, 3.1 million cubic metres of wood-based panels, 6.7 million cubic metres of sawn wood, and 1.9 million cubic metres of other wood.

*Forest Research 2024 Provisional Figures*



In **Holistic Transition**, industry is the first sector to begin utilising significant amounts of hydrogen. Over time, other sectors begin to utilise hydrogen, with a balanced mixture of end users by 2050.

Notes: Major users of hydrogen only. Defined as demand in excess of 5 TWh in any year.